

A unique process joins the end wire from a used empty drum with the start wire of the next full drum. Both butt-welding* and flash removal operations take only seconds and the two wire ends may be joined during the welding cycle.



- ▶ **Eliminates downtime for wire changeover**
- ▶ No operator action needed – robots can continue to weld while the next full drum is being installed
- ▶ Designed for use with optional **Wire Pilot® Feed Assist and Wire Guide Modules**
- ▶ Works with one or two-station robotic cells (2 or 4 drums)
- ▶ Accepts any fiber drum or cardboard wire packaging design
- ▶ Easy-to-use resistance Butt Welder (welds up to 0.078" / 2 mm wire)
- ▶ Mountable to floor or wall (mounting holes included)
- ▶ Appropriate drum-handling carts available

SPECIFICATIONS

Dimensions will vary based on drum size

- ▶ **2 Drum Unit:** 47" W x 29" D x 7' H
(1.2 m W x 0.74 m D x 2.13 m H)
- ▶ **4 Drum Unit:** 47" W x 55" D x 7' H
(1.2 m W x 1.4 m D x 2.13 m H)

* Wire manufacturer must present wire end at top of dispensing drum to butt weld beginning and ending of wires. Call customer service for information.



ACCESSORIES



Wire Gage Block WGB
For 0.035", 0.045", 0.052", and 0.062" wire (included with docking station)



Wire Parters BW-WP
Leaves flat wire ends for easy butt-welding



Portable Resistance Butt Welder NSW-BW-R13 or NSW-BW-220-R13
Welds up to 0.078" (2 mm) ferrous wire



Wire Sizer
Order by wire size
Removes burr in wire joint for smooth feeding

Non-Stop® Wire Dispensing System with two stations NSW-20.4F-18B-2 (shown)

Shown with optional Butt Welder Docking Station. Docking Station includes Butt Welder, Wire Parters and Wire Gage Block. Wire Sizer sold separately.

NON-STOP® WIRE DISPENSING SYSTEMS & ACCESSORIES

Part No.	Description
NSW-20.4F-18B-2	System with 2 stations for 20.4" (518 mm) Ø Drums (1-Torch)
NSW-20.4F-18B-4	System with 4 stations for 20.4" (518 mm) Ø Drums (2-Torch)
NSW-23.1F-18B-2	System with 4 stations for 23.4" (594 mm) Ø Drums (1-Torch)
NSW-23.1F-18B-4	System with 4 stations for 23.4" (594 mm) Ø Drums (2-Torch)
NSW-SC24-18B-2	System with 2 stations: 1,000 lb (453 kg) Accu-Pak Drums (1-Torch)
NSW-SC24-18B-4	System with 4 stations: 1,000 lb (453 kg) Accu-Pak Drums (2-Torch)
NSW-OC23.5-18B-2	System with 2 stations: 23.5" (597 mm) Octagon Drums (1-Torch)
NSW-OC23.5-18B-4	System with 4 stations: 23.5" (597 mm) Octagon Drums (2-Torch)
WGM-NSW-SW-14	Wire Guide Module Swivel Kit Adapter (allows 360° rotation)
NSW-BW-DS-R13	Butt Welder Docking Station (110 V)
NSW-BW-DS-220-R13	Butt Welder Docking Station (220 V US)
NSW-BW-DS-220EU-R13	Butt Welder Docking Station (220 V European)

Part No.	Description
NSW-BW-R13	Portable Resistance Butt Welder (110 V)
NSW-BW-220-R13	Portable Resistance Butt Welder (220 V US)
NSW-BW-220EU-R13	Portable Resistance Butt Welder (220 V European)
NSW-BW-WS-039	Wire Sizer for 0.035" (0.9 mm) wire*
NSW-BW-WS-049	Wire Sizer for 0.045" (1.2 mm) wire*
NSW-BW-WS-052	Wire Sizer for 0.052" (1.3 mm) wire*
NSW-BW-WS-063	Wire Sizer for 0.062" (1.6 mm) wire*
NSW-BW-WS-078	Wire Sizer for 0.078" (2 mm) wire*
NSW-BW-WS-1	Wire Sizer without dies* (must specify wire size when ordering)
BW-WP	Wire Parters (included on butt welder docking station)
WGB	Wire Gage Block (included on butt welder docking station)

* Wire Sizer replacement dies available. Contact customer service for more information.



ADDITIONAL WIRE EXIT POINT OPTIONS

Wire Pilot® Feed Assist Mounting Adapter



NSW-PFA-AK-15
(includes liner)

Guide Module(s)

May be mounted in a fixed position or with the Guide Module Swivel Kit to allow 360° rotation

ELIMINATES DOWNTIME FOR WIRE CHANGEOVER!



DRUM SETUP



Single Torch Unit
(with round drums)



2-Torch Unit
(with round drums)

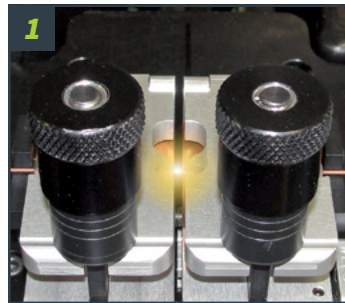
DRUM 1

DRUM 2

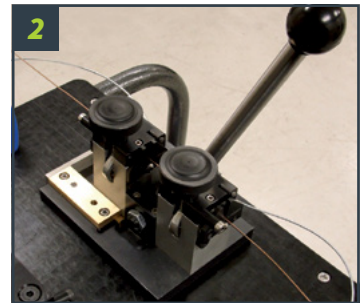
Start Wire

Start Wire

End Wire



1 Join the end wire from drum 1 with the start wire from drum 2 using the Butt Welder.



2 Remove the flash in the wire joint using the Wire Sizer (sold separately) or rotary tool with stone bit.



3 Position the wire on the pathway between the two drums.



4 When wire from drum 1 runs out, the transfer arm will switch over to drum 2. Simply replace empty drum and repeat steps 1 – 3.